

West Milford Township Public Schools



Annual Report of
Student Achievement
September 2011



Iris Wechling

Director of Education



Paul Gorski

District Test Coordinator

Debra Gretina

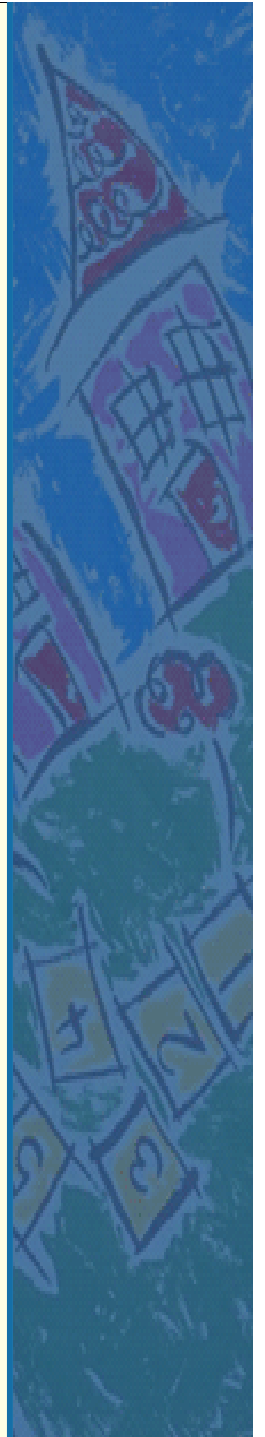
Supervisor of Mathematics

Karen Norman

Supervisor of Language Arts

Margaret Codey

Supervisor of Science



Acknowledgements

Special thanks to:

James Cresbaugh

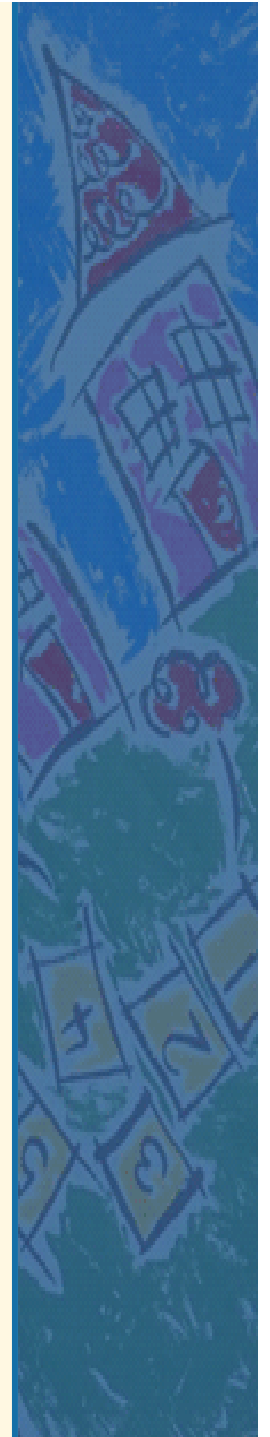
*High School Testing Coordinator
for National Assessment data*

Debora Gabriele

*District Testing Data Support
for compilation and analysis of testing data*

NJASK, HSPA, AHSA

**NJ Biology Competency Test
AYP, DFG, JPM**



NCLB and State Definitions

Adequate Yearly Progress (AYP)

District Factor Group (DFG)

Just-Proficient Mean (JPM)

Safe Harbor

Adequate Yearly Progress (AYP)

Enacted as part of the 2001 No Child Left Behind (NCLB) Act, federal law

- Examines and holds schools accountable for standardized test scores, attendance, and graduation rates for all student subgroups.

Adequate Yearly Progress (AYP)

- Based on expectations for growth in student achievement that is continuous and substantial, such that all students are proficient in reading/language arts and mathematics no later than 2013-2014
- To keep up with the NCLB timeline, AYP benchmarks increased for 2010-11 school year an average of 15 percentage points to meet NCLB benchmarks

Adequate Yearly Progress (AYP)

- Under NCLB, schools that miss AYP in any one year are placed into “early warning” status
- Schools that do not make AYP for two consecutive years in the same content area are identified as:

Schools in Need of Improvement (SINI)

- Federal interventions are imposed for Title I schools identified as SINI

District Factor Group (DFG)

- First developed by NJ in 1975 for the purpose of comparing performance on state assessments across demographically similar school districts
- Updated every 10 years, using census data
- Last updated in 2004
- Based on a community's socioeconomic status (adult education level attainment, occupations, unemployment, poverty, median family income)
- 8 categories: **A** is the lowest, **I** is the highest
- West Milford is categorized **FG**. There are 4 categories below and 3 above

Just Proficient Mean (JPM)

- The average raw score within each content standard of students who have reached proficiency on a state standardized test
- Comparison data available for state, DFG, and district analysis
- Calculated each testing year based on NJ student performance, so varies by grade level, subject, and testing year

Safe Harbor

A school may be considered to have made AYP if the percentage of students in any subgroup that did not meet proficiency on the State assessments for that year decreased by 10% of that percentage from the preceding year.



West Milford Township

Public Schools

National Assessments

2011



West Milford Township

Public Schools

SAT

ACT

Advanced Placement Exams



SAT Results

	Class of 2009			Class of 2010			Class of 2011		
	Math	Reading	Writing	Math	Reading	Writing	Math	Reading	Writing
District	506	491	500	524	513	511	512	503	504
DFG	513	495	493	514	494	494	February 2012		
State	495	510	494	515	501	496	516	501	492



ACT Results

	Class of 2009	Class of 2010	Class of 2011
	Composite	Composite	Composite
District	20.8	20.9	21.8
State	23.1	23.2	23.0



AP Results

AP Score	Class of 2009	Class of 2010	Class of 2011
3 or higher	64 %	34%	66%
Of those earning >3, percent who earned an advanced score of 4 or 5	36%	65%	35%

New Jersey Assessments

NJ Assessment of Skills and Knowledge

NJASK for grades 3 through 8

Alternative Proficiency Assessment

APA for grades 3 through 8 and 11

Alternate Proficiency Assessment - APA

- All students must participate in state assessments. For students with disabilities who are unable to participate in the general assessments, New Jersey designed the **Alternate Proficiency Assessment**.
- These scores are added into the district's overall totals for purposes of federal NCLB reporting.
- Because of the very small numbers of students participating in this assessment, scores will not be reported.

New Jersey Assessments

NJ Biology Competency Test

NJBCT for all students enrolled in Biology

High School Proficiency Assessment

HSPA for grade 11 for graduation

Alternate High School Assessment

AHSA for graduation

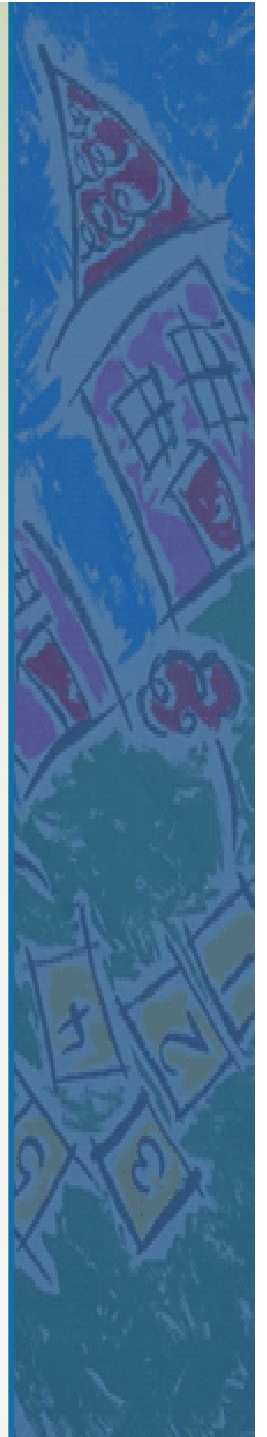
West Milford Township

Public Schools



Language Arts
Literacy

2011



Results NJ ASK 3

AYP = 79

Language Arts Literacy

AYP increased by 20 points in 2011

	2009		2010		2011	
	Partially Proficient	Proficient/Advanced	Partially Proficient	Proficient/Advanced	Partially Proficient	Proficient/Advanced
District	29.4	70.6	33.9	66.1	36.9	63.1
DFG	32.0	68.0	34.0	66.0	30.3	69.7
State	37.3	62.7	40.3	59.7	37.0	63.0
General Ed	25.8	74.2	25.6	74.4	29.9	70.1
Special Ed	42.4	57.6	55.2	44.8	57.8	42.2

Results NJ ASK 3

AYP = 79

Language Arts Literacy

2011	District		DFG		State	
	Partially Proficient	Proficient/Advanced	Partially Proficient	Proficient/Advanced	Partially Proficient	Proficient/Advanced
General Ed	29.9	70.1	23.4	76.6	37.0	63.0
Special Ed	57.8	42.2	57.3	42.7		

Results NJ ASK 3

AYP = 79

Language Arts Literacy

	General education did not achieve AYP but exceeded the state and DFG.	2010	2011
		Proficient/Advanced	Proficient/Advanced
District		66.1	63.1
DFG		GE 72.6 SE 36.5	GE 76.6 SE 42.7
State		59.7	63.0
General Ed	Special education .5 away from DFG.	74.4	70.1
Special Ed		44.8	42.2

Results NJ ASK 4

AYP = 79

Language Arts Literacy

AYP increased by 20 points in 2011

	2009		2010		2011	
	Partially Proficient	Proficient/Advanced	Partially Proficient	Proficient/Advanced	Partially Proficient	Proficient/Advanced
District	26.1	73.9	29.5	70.5	27.3	72.7
DFG	31.1	68.9	34.7	65.3	30.4	69.6
State	37.0	63.0	40.4	59.6	37.3	62.7
General Ed	18.1	81.9	22.5	77.5	14.5	85.5
Special Ed	31.3	68.7	57.1	42.9	60.7	39.3

Results NJ ASK 4

AYP = 79

Language Arts Literacy

2011	District		DFG		State	
	Partially Proficient	Proficient/Advanced	Partially Proficient	Proficient/Advanced	Partially Proficient	Proficient/Advanced
General Ed	14.5	85.5	22.4	77.6	37.3	62.7
Special Ed	60.7	39.3	63.0	37.0		

Results NJ ASK 4

AYP = 79

Language Arts Literacy

		2010	2011
		Proficient/Advanced	Proficient/Advanced
District	General education exceeded AYP , DFG and state.	70.5	72.7
DFG		GE 72.4 SE 32.7	GE 77.6 SE 36.9
State	Special Education exceeded DFG	59.6	62.7
General Ed		77.5	85.5
Special Ed		42.9	39.3

Results NJ ASK 5

AYP = 79

Language Arts Literacy

AYP increased by 20 points in 2011

	2009		2010		2011	
	Partially Proficient	Proficient/Advanced	Partially Proficient	Proficient/Advanced	Partially Proficient	Proficient/Advanced
District	21.6	78.4	26.1	73.9	28.6	71.4
DFG	27.0	73.0	31.3	68.7	32.2	67.8
State	34.2	65.8	36.9	63.0	39.1	60.9
General Ed	12.2	87.8	15.0	85.0	20.7	79.3
Special Ed	63.8	36.2	70.2	29.8	54.9	45.1

Results NJ ASK 5

AYP = 79

Language Arts Literacy

2011	District		DFG		State	
	Partially Proficient	Proficient/Advanced	Partially Proficient	Proficient/Advanced	Partially Proficient	Proficient/Advanced
General Ed	20.7	79.3	24.8	75.2	39.1	60.9
Special Ed	54.9	45.1	65.5	34.6		

Results NJ ASK 5

AYP = 79

Language Arts Literacy

		2010	2011
		Proficient/Advanced	Proficient/Advanced
District	General education exceeded AYP, DFG and state.	73.9	71.4
DFG		GE 76.6 SE 31.6	GE 75.2 SE 34.6
State	Special education exceeded DFG.	63.0	60.9
General Ed		85.0	79.3
Special Ed		29.8	45.1

Results NJ ASK 6

AYP = 86

Language Arts Literacy

AYP increased by 14 points in 2011

	2009		2010		2011	
	Partially Proficient	Proficient/Advanced	Partially Proficient	Proficient/Advanced	Partially Proficient	Proficient/Advanced
District	19.6	80.4	22.2	77.8	20.5	79.5
DFG	24.1	75.9	28.9	71.1	27.5	72.5
State	30.2	69.8	34.7	65.3	33.3	66.7
General Ed	10.0	90.0	12.5	87.5	10.3	89.7
Special Ed	60.0	40.0	65.6	34.4	60.0	40.0

Results NJ ASK 6

AYP = 86

Language Arts Literacy

2011	District		DFG		State	
	Partially Proficient	Proficient/Advanced	Partially Proficient	Proficient/Advanced	Partially Proficient	Proficient/Advanced
General Ed	10.3	89.7	19.3	80.7	33.3	66.7
Special Ed	60.0	40.0	66.8	33.7		

Results NJ ASK 6

AYP = 86

Language Arts Literacy

	District and general education exceeded DFG and state. General education made AYP.	2010		2011	
		Partially Proficient	Proficient/Advanced	Partially Proficient	Proficient/Advanced
District		22.2	77.8	20.5	79.5
DFG		28.9	71.1	27.5	72.5
State		34.7	65.3	33.3	66.7
General Ed		12.5	87.5	10.3	89.3
Special ED		65.6	34.4	60.0	40.0

Elementary LAL Initiatives

- Continuation of RTI model at Apshawa and PK to increase instructional support for primary students
- Implementation of Reader's and Writer's Workshop in Grades 3-6 in all elementary schools
- Increase student motivation to read independently through the expansion of classroom libraries
- Administration of the **Benchmark Assessment** to all students in Grades K-6 to gather data and drive instruction
- Targeted guided reading instruction
- Increased data analysis to improve instruction
- Continued professional development

Results NJ ASK 7

AYP = 86

Language Arts Literacy

AYP increased by 14 points in 2011

	2009		2010		2011	
	Partially Proficient	Proficient/Advanced	Partially Proficient	Proficient/Advanced	Partially Proficient	Proficient/Advanced
District	31.3	68.7	28.0	72.0	32.9	67.1
DFG	22.4	77.6	24.8	75.2	29.9	70.1
State	28.1	71.9	30.8	69.2	36.7	63.3
General Ed	20.8	79.2	18.2	81.8	22.7	77.3
Special Ed	70.0	30.0	73.7	26.3	80.0	20.0

Results NJ ASK 7

AYP = 86

Language Arts Literacy

2011	District		DFG		State	
	Partially Proficient	Proficient/Advanced	Partially Proficient	Proficient/Advanced	Partially Proficient	Proficient/Advanced
General Ed	22.7	77.3	21.5	78.5	36.7	63.3
Special Ed	80.0	20.0	73.6	26.4		

Results NJ ASK 7

AYP = 86

Language Arts Literacy

		2010	2011
		Proficient/Advanced	Proficient/Advanced
District	Although we did not make AYP, our general education exceeded the state.	72.0	67.1
DFG		GE 84.2 SE 28.7	GE 78.5 SE 26.4
State		69.2	63.3
General Ed		81.8	77.3
Special Ed		26.3	20.0

Results NJ ASK 8

AYP = 86

Language Arts Literacy

AYP increased by 14 points in 2011

	2009		2010		2011	
	Partially Proficient	Proficient/Advanced	Partially Proficient	Proficient/Advanced	Partially Proficient	Proficient/Advanced
District	9.1	90.9	16.9	83.1	12.3	87.7
DFG	11.8	88.2	12.1	87.9	13.0	87.0
State	18.1	81.9	17.6	82.5	17.8	82.2
General Ed	2.2	97.8	7.3	92.7	4.5	95.5
Special Ed	40.4	59.6	51.4	48.7	47.5	52.5

Results NJ ASK 8

AYP = 86

Language Arts Literacy

2011	District		DFG		State	
	Partially Proficient	Proficient/Advanced	Partially Proficient	Proficient/Advanced	Partially Proficient	Proficient/Advanced
General Ed	4.5	95.5	5.5	94.5	17.8	82.2
Special Ed	47.5	52.5	50.8	49.2		

Results NJ ASK 8

AYP = 86

Language Arts Literacy

		2010	2011
		Proficient/Advanced	Proficient/Advanced
District	District and general education made AYP and exceeded DFG and state. Special education exceeded DFG	90.9	87.7
DFG		88.2	GE 94.5 SE 49.2
State		81.9	82.2
General Ed		97.8	95.5
Special Ed		59.6	52.5

Results NJ ASK 8

AYP = 86

Language Arts Literacy

	Grade 8 scores represent an increase in <u>ALL</u> subgroups.	2010 – grade 8	2011-Grade 8
		Proficient/Advanced	Proficient/Advanced
District		83.1	87.7
General Ed		92.7	95.5
Special Ed		48.7	52.5

Macopin LAL Initiatives

- Creation of an Action Plan on reading strategies in the content areas, integrating language arts, social studies, and science, including professional development and integrated department meetings
- Creation of a PDP focused on the creation and implementation of a reading and writing nonfiction unit of study through ongoing professional development in Writer's Workshop
- Reading log requiring 20 minutes of independent reading 5 times a week
- Articulation across grade levels at department meetings

Macopin LAL Initiatives

- NJ ASK data analysis to inform instruction
- Analysis of benchmark assessment for seventh graders and formation of small instructional groups
- NJ ASK preparation incorporated into daily instruction and the development of a Test Genre unit of study
- Department meetings to focus directly on improving instruction through reading and discussion of professional books and articles and viewing of multimedia resources
- Ongoing professional development, both in and out of district, the goal of which is to effect change

Results HSPA

AYP = 92

Language Arts Literacy

AYP increased by 7 points in 2011

	2009		2010		2011	
	Partially Proficient	Proficient/Advanced	Partially Proficient	Proficient/Advanced	Partially Proficient	Proficient/Advanced
District	11.2	88.8	9.4	90.6	5.4	94.6
DFG	12.4	87.6	8.6	91.4	7.2	92.8
State	16.4	83.6	12.9	87.1	10.5	89.5
General Ed	4.9	94.1	2.4	97.6	1.2	98.8
Special Ed	42.9	57.1	39.7	60.3	23.3	76.7

Results HSPA

AYP = 92

Language Arts Literacy

2011	District		DFG		State	
	Partially Proficient	Proficient/Advanced	Partially Proficient	Proficient/Advanced	Partially Proficient	Proficient/Advanced
General Ed	1.2	98.8	2.2	97.8	10.5	89.5
Special Ed	23.3	76.7	33.3	66.7		

Results HSPA

AYP = 92

Language Arts Literacy

		2010	2011
		Proficient/Advanced	Proficient/Advanced
District	District and general education exceeded AYP, DFG and state.	90.6	94.6
DFG		GE 96.9 SE 60.4	GE 97.8 SE 66.7
State		87.1	89.5
General Ed		97.6	98.8
Special ED		60.3	76.7

Results HSPA

AYP = 92

Language Arts Literacy

		2010	2011
		Proficient/Advanced	Proficient/Advanced
District	Special Education exceeded DFG special education by 10 points.	90.6	94.6
DFG		GE 96.9 SE 60.4	GE 97.8 * SE 66.7
State		87.1	89.5
General Ed		97.6	98.8
Special ED		60.3	* 76.7

Results HSPA

AYP = 92

Language Arts Literacy

	Grade 11 scores represent an increase in ALL subgroups.	2010		2011	
			Proficient/Advanced		Proficient/Advanced
District			90.6		94.6
General Ed			97.6		98.8
Special Ed			60.3		76.7

Alternate High School Assessment

Language Arts Literacy – LAL

	Students engaged in AHSA	Students passing Senior Year HSPA	Students graduating via AHSA
March 2009 HSPA Class of 2010	18	17	0 1 exempted by CST
March 2010 HSPA Class of 2011	11	8	1 1 exempted by CST 1 transferred out
March 2011 HSPA Class of 2012	9	TBD	TBD

High School LAL Initiatives

- Continuation of Fundamentals 12 for AHSA
- Continuation of Fundamentals classes for Grades 9-11
- Implementation of Writer's Workshop through ongoing professional development
- A common PDP focusing on the development of a nonfiction unit of study including feature articles and editorials
- An Action Plan focusing on an increase of reading and writing nonfiction text, aligned with NJCCS

High School LAL Initiatives

- Focus of department meetings on improving instruction through the reading and discussion of professional books and articles, staff presentations and the viewing of multi media resources
- A focus on student motivation, engagement, and choice
- Continued integration of technology
- Implementation of WRAP and WPP to prepare students for responding to persuasive writing prompts on state tests

West Milford Township Public Schools



Mathematics
2011



Results NJ ASK 3

AYP = 83

Mathematics

AYP increased by 17 points in 2011

	2009		2010		2011	
	Partially Proficient	Proficient/Advanced	Partially Proficient	Proficient/Advanced	Partially Proficient	Proficient/Advanced
District	14.1	85.9	14.1	85.9	16.6	83.4
General Ed	11.5	88.5	9.9	90.1	13.0	87.0
Special Ed	23.9	76.1	25.0	75.0	25.0	75.0
DFG	20.4	79.6	16.5	83.5	15.7	84.3
State	24.8	75.2	21.9	78.1	21.1	78.9

Results NJ ASK 3

AYP = 83

Mathematics

2011	District		DFG		State	
	Partially Proficient	Proficient/Advanced	Partially Proficient	Proficient/Advanced	Partially Proficient	Proficient/Advanced
General Ed	13.0	87.0	11.5	88.5	21.1	78.9
Special Ed	25.0	75.0	30.6	69.4		

Results NJ ASK 3

AYP = 83

Mathematics

	Total population and general education continue to exceed increased AYP benchmark.	2011	
		Partially Proficient	Proficient/Advanced
District	General education continues to exceed AYP, DFG, and state performance.		83.4
General Ed			87.0
DFG			84.3
State			78.9

Results NJ ASK 3

AYP = 83

Mathematics

2011	District		DFG	
		Proficient/ Advanced		Proficient/ Advanced
	Special Education exceeds DFG performance.			
Special Ed		75.0		69.4

Results NJ ASK 4

AYP = 83

Mathematics

AYP increased by 17 points in 2011

	2009		2010		2011	
	Partially Proficient	Proficient/Advanced	Partially Proficient	Proficient/Advanced	Partially Proficient	Proficient/Advanced
District	18.5	81.5	12.5	87.5	15.7	84.3
General Ed	12.8	87.2	6.8	93.2	8.6	89.4
Special Ed	39.0	61.0	34.4	65.6	34.1	65.9
DFG	24.1	75.9	18.4	81.6	16.3	83.7
State	27.0	73.0	23.0	77.0	20.7	79.3

Results NJ ASK 4

AYP = 83

Mathematics

2011	District		DFG		State	
	Partially Proficient	Proficient/Advanced	Partially Proficient	Proficient/Advanced	Partially Proficient	Proficient/Advanced
General Ed	8.6	89.4	11.7	88.3	20.7	79.3
Special Ed	34.1	65.9	34.3	65.7		

Results NJ ASK 4

AYP = 83

Mathematics

	Total population and general education continue to exceed increased AYP, DFG, and state benchmarks.	2011	
			Proficient/ Advanced
District			84.3
General Ed			89.4
DFG			83.7
State			79.3

Results NJ ASK 4

AYP = 83

Mathematics

		2010		2011	
			Proficient/ Advanced		Proficient/ Advanced
District	Special education scores increased				
General Ed					
Special Ed			65.6		65.9
DFG					
State					

Results NJ ASK 4

AYP = 83

Mathematics

2011	District		DFG	
		Proficient/ Advanced		Proficient/ Advanced
	... AND continue to exceed DFG Special Education benchmark.			
Special Ed		65.9		65.7

Results NJ ASK 5

AYP = 83

Mathematics

AYP increased by 17 points in 2011

	2009		2010		2011	
	Partially Proficient	Proficient/Advanced	Partially Proficient	Proficient/Advanced	Partially Proficient	Proficient/Advanced
District	18.1	81.9	17.9	82.1	13.0	87.0
General Ed	14.4	85.6	10.3	89.7	7.6	92.4
Special Ed	32.8	67.2	47.4	52.6	30.6	69.4
DFG	18.9	81.1	17.3	82.7	15.3	84.7
State	22.7	77.3	21.3	78.7	19.4	80.6

Results NJ ASK 5

AYP = 83

Mathematics

2011	District		DFG		State	
	Partially Proficient	Proficient/Advanced	Partially Proficient	Proficient/Advanced	Partially Proficient	Proficient/Advanced
General Ed	7.6	92.4	9.5	90.5	19.4	80.6
Special Ed	30.6	69.4	41.3	58.7		

Results NJ ASK 5

AYP = 83

Mathematics

	Total population, general education, and Special Education increased in performance.	2010		2011	
		Partially Proficient	Proficient/ Advanced	Partially Proficient	Proficient/ Advanced
District			82.1		87.0
General Ed			89.7		92.4
Special Ed			52.6		69.4
DFG					
State					

Results NJ ASK 5

AYP = 83

Mathematics

		2011	
		Partially Proficient	Proficient/Advanced
District	Total population and general education continue to exceed AYP benchmark as well as DFG and state performance.		87.0
General Ed			92.4
DFG			84.7
State			80.6

Results NJ ASK 5

AYP = 83

Mathematics

2011	District		DFG	
		Proficient/ Advanced		Proficient/ Advanced
	Special Education continues to exceed DFG Special Education benchmark.			
Special Ed		69.4		58.7

Results NJ ASK 6

AYP = 80

Mathematics

AYP increased by 19 points in 2011

	2009		2010		2011	
	Partially Proficient	Proficient/Advanced	Partially Proficient	Proficient/Advanced	Partially Proficient	Proficient/Advanced
District	21.2	78.8	18.2	81.8	15.1	84.9
General Ed	12.4	87.6	14.7	85.3	8.6	91.4
Special Ed	58.3	41.7	33.3	66.6	40.0	60.0
DFG	25.0	75.0	23.5	76.5	19.1	80.9
State	29.1	70.9	28.2	71.8	22.7	77.3

Results NJ ASK 6

AYP = 80

Mathematics

2011	District		DFG		State	
	Partially Proficient	Proficient/Advanced	Partially Proficient	Proficient/Advanced	Partially Proficient	Proficient/Advanced
General Ed	8.6	91.4	12.3	87.7	22.7	77.3
Special Ed	40.0	60.0	51.1	48.9		

Results NJ ASK 6

AYP = 80

Mathematics

	Total and general population increased and exceeded AYP benchmark as well as DFG and state performance.	2010		2011	
		Partially Proficient	Proficient/Advanced	Partially Proficient	Proficient/Advanced
District			81.8	15.1	84.9
General Ed			85.3	8.6	91.4
DFG			76.5	19.1	80.9
State			71.8	22.7	77.3

Results NJ ASK 6

AYP = 80

Mathematics

2011	District		DFG	
		Proficient/ Advanced		Proficient/ Advanced
	Special Education exceeds DFG Special Education.			
Special Ed		60.0		48.9

Elementary Mathematics Initiatives

- Alignment of content standards to new Common Core State Standards in K-2
- Balance of numeracy as a fundamental core of elementary school mathematics, practice and self-assessment of basic facts AND the construction and meaning of basic algorithms
- Data analysis of NJASK Cluster Reports to inform instruction
- Professional development to build content skills in mathematics for faculty: general education, ENCORE, and Resource Center teachers

Results NJ ASK 7

AYP = 80

Mathematics

AYP increased by 19 points in 2011

	2009		2010		2011	
	Partially Proficient	Proficient/Advanced	Partially Proficient	Proficient/Advanced	Partially Proficient	Proficient/Advanced
District	37.7	62.3	36.8	63.2	35.4	64.6
General Ed	26.3	73.7	26.7	73.3	27.1	72.9
Special Ed	78.6	21.4	84.2	15.8	72.6	27.4
DFG	29.8	70.2	31.9	68.1	30.3	69.7
State	33.7	66.3	35.7	64.3	34.3	65.7

Results NJ ASK 7

AYP = 80

Mathematics

2011	District		DFG		State	
	Partially Proficient	Proficient/Advanced	Partially Proficient	Proficient/Advanced	Partially Proficient	Proficient/Advanced
General Ed	27.1	72.9	22.3	77.7	34.3	65.7
Special Ed	72.6	27.4	72.0	28.0		

Results NJ ASK 7

AYP = 80

Mathematics

AYP increased by 19 points in 2011

		2011	
			Proficient/ Advanced
	While general education did not meet increased AYP benchmark, performance exceeded both DFG and state performances.		
General Ed			72.9
DFG			69.7
State			65.7

Results NJ ASK 7

AYP = 80

Mathematics

	District scores increased or held reasonably steady.	2010		2011	
			Proficient/Advanced		Proficient/Advanced
District			63.2		64.6
General Ed	Special Education performance increased.		73.3		72.9
Special Ed			15.8		27.4

Results NJ ASK 8

AYP = 80

Mathematics

AYP increased by 19 points in 2011

	2009		2010		2011	
	Partially Proficient	Proficient/Advanced	Partially Proficient	Proficient/Advanced	Partially Proficient	Proficient/Advanced
District	26.7	73.3	35.9	64.1	24.7	75.3
General Ed	15.1	84.9	26.5	73.5	13.6	86.4
Special Ed	80.7	19.3	68.6	31.4	75.4	24.6
DFG	23.2	76.8	27.9	72.1	25.6	74.4
State	28.8	71.2	31.5	68.5	28.5	71.5

Results NJ ASK 8

AYP = 80

Mathematics

2011	District		DFG		State	
	Partially Proficient	Proficient/Advanced	Partially Proficient	Proficient/Advanced	Partially Proficient	Proficient/Advanced
General Ed	13.6	86.4	16.3	83.7	28.5	71.5
Special Ed	75.4	24.6	72.4	27.6		

Results NJ ASK 8

AYP = 80

Mathematics

AYP increased by 19 points in 2011

		2010		2011	
		Partially Proficient	Proficient/Advanced	Partially Proficient	Proficient/Advanced
District	District and general education scores increased.		64.1		75.3
General Ed			73.5		86.4
		General education met increased AYP benchmark.			

Results NJ ASK 8

AYP = 80

Mathematics

2011	District		DFG	
		Proficient/ Advanced		Proficient/ Advanced
	Special Education approaches DFG Special Education.			
Special Ed		24.6		27.6

Macopin Mathematics Initiatives

- Action Plan to dig deep in basic tools of mathematics in full-year Foundations of Math classes, supported by targeted practice in number sense, operations, rational numbers, percents, fractions, decimals, measures of central tendency and proportions
- Additional emphasis on prealgebra skills in grade 7 and homework to reinforce investigations with traditional practice of algorithms
- Vertical articulation from grade 6 to high school to align curriculum to Common Core State Standards in anticipation of implementation in 2013

Macopin Mathematics Initiatives

- Additional emphasis on algebra skills in grade 8 and homework to reinforce investigations with traditional practice of algorithms
- Redesign of grade 8 curriculum that allows for development of additional algebra skills in spring semester prior to freshman year
- Targeted instruction in an inclusion setting for students in need in grade 8
- Alignment with high school entrance expectations; creation and administration of algebra prognosis assessment in grade 8

Results HSPA

AYP = 86

Mathematics

AYP increased by 12 points in 2011

	2009		2010		2011	
	Partially Proficient	Proficient/Advanced	Partially Proficient	Proficient/Advanced	Partially Proficient	Proficient/Advanced
District	21.9	78.1	25.6	74.4	19.9	80.1
General Ed	15.5	84.5	15.1	84.9	10.2	89.8
Special Ed	54.5	45.5	70.6	29.4	60.0	40.0
DFG	23.3	76.7	22.9	77.1	21.3	78.7
State	27.2	72.8	25.9	74.1	24.8	75.2

Results HSPA

AYP = 86

Mathematics

2011	District		DFG		State	
	Partially Proficient	Proficient/Advanced	Partially Proficient	Proficient/Advanced	Partially Proficient	Proficient/Advanced
General Ed	10.2	89.8	13.3	86.7	24.8	75.2
Special Ed	60.0	40.0	65.9	34.1		

Results HSPA

AYP = 86

Mathematics

	District, general education, and Special Education scores increased.	2010		2011	
			Proficient/ Advanced		Proficient/ Advanced
District			74.4		80.1
General Ed			84.9		89.8
Special Ed			29.4		40.0

Results HSPA

AYP = 86

Mathematics

		2010	2011
		Proficient/ Advanced	Proficient/ Advanced
General Ed	General education exceeded AYP and exceeded state average and showed greater gains than DFG and state performance.	84.9	89.8
DFG		77.1	78.7
State		74.1	75.2

Alternate High School Assessment Mathematics

	Students engaged in AHSA	Students passing Senior Year HSPA	Students graduating via AHSA
March 2009 HSPA Class of 2010	52	28	16 7 exempt by CST 1 transferred out
March 2010 HSPA Class of 2011	51	33	16 1 transferred out 1 retained in grade 12
March 2011 HSPA Class of 2012	37	West Milford continues to graduate all mathematics students who participate in the AHSA program with 100% success.	

Alternate High School Assessment Mathematics

	Students engaged in AHSA	Students passing Senior Year HSPA	Students graduating via AHSA
March 2010 HSPA Class of 2011	51	33	16 1 transferred out 1 retained in grade 12
March 2011 HSPA Class of 2012	37	TBD	TBD
<p>Significant reduction in number of students requiring AHSA to demonstrate proficiency. Lowest figure in 6 years.</p>			

High School Mathematics Initiatives

- Action Plan: assessment of student performance in algebra and geometry in Applied classes
- Realignment of Fundamentals curriculum to match NJ STEPS guidelines for graduation
- Online practice for algebra and geometry skills
Alignment of high school entrance expectations; creation and administration of algebra prognosis assessment in grade 8
- Vertical collaboration and articulation of new Common Core State Standards to be implemented 2012

West Milford Township

Public Schools



Science
2011

Results NJ ASK 4

Science

	2009		2010		2011	
	Partially Proficient	Proficient/Advanced	Partially Proficient	Proficient/Advanced	Partially Proficient	Proficient/Advanced
District →	2.8	97.2	2.9	97.1	2.3	97.7 ↑
DFG	5.2	94.9	3.3	96.7	5.4	94.6
State →	9.1	90.9	6.6	93.4	10.0	90.0
General Ed →	1.8	98.2	1.2	98.8	0.5	99.5 ↑
Special Ed	6.8	93.2	9.4	90.6	7.1	92.9 ↑

Results NJ ASK 4

Science

2011	District		DFG	
	Partially Proficient	Proficient/ Advanced	Partially Proficient	Proficient/ Advanced
General Ed	0.5	↑ 99.5	2.6	97.4
Special Ed	7.1	92.9	15.3	84.7

Results NJ ASK 8

Science

	2009		2010		2011	
	Partially Proficient	Proficient/Advanced	Partially Proficient	Proficient/Advanced	Partially Proficient	Proficient/Advanced
District	8.5	91.5	10.0	90.0	11.4	88.6↑
DFG	9.5	90.5	10.9	89.1	13.4	86.6
State	15.9	84.1	17.0	83.0	18.8	81.2
General Ed	2.6	97.4	3.6	96.4	3.8	96.2↑
Special Ed	35.7	64.3	32.4	67.6	43.3	56.7

Results NJ ASK 8

Science

	2011			
	Partially Proficient	Proficient/Advanced	Scale Score Mean	
District	11.4	88.6	233.3↑	
DFG	13.4	86.6	232.3	
STATE	18.8	81.2	229.1	
General Ed	3.8	96.2	240.2↑	(DFG 238)
Special Ed	43.3	56.7	204.7↑	(DFG 204.3)

Results NJ ASK 8

Science

2011	District		DFG	
	Partially Proficient	Proficient/Advanced	Partially Proficient	Proficient/Advanced
General Ed	↑ 3.8	96.2	6.7	93.3
Special Ed	43.3	56.7	45.4	54.6

NJ Biology Competency Test

NJBCT

2011	District	
	Partially Proficient	Proficient/Advanced
District	46.9	53.1
General Ed	36.6	63.4
Special Ed	78.4	21.6

Science Initiatives

- District-wide Science Fair Competition; investigate expanding grade levels;
- Horizontal articulation meetings in grades K-6, and vertical articulation meetings in grades 7-12;
- Professional Development partnerships with Stevens Institute of Technology; investigate expanding professional development partnerships;
- Work with individual schools to support school and teacher initiatives;
- Review Passaic County Science Consortium Curriculum;

Science Initiatives

Macopin

- Review and integration of Passaic County Science Curriculum Initiative;
- Collaboration with language arts and social studies departments to develop reading strategies in the content areas;
- Articulation between and among grade levels;
- Exploration of leveled readers for science;

Science Initiatives

High School

- Review NJBCT and create writing tasks that mirror the writing expectations on the NJBCT;
- Individual PDP plans that support the NJ Core Curriculum Standards for “best practice” instructional strategies;
- Unpacking Passaic County Science Consortium Document to ascertain and address student misconceptions in science;
- New Courses: 2011-Environmental Science; AP Chemistry

Administrative Initiatives

- ❑ School based collaborative development teams
 - Analyze data
 - Identify needs
 - Seek professional development
- ❑ Building based review of state test scores
 - Building development of action plans
- ❑ Computer labs operational in all buildings
- ❑ Monthly elementary principal meetings
- ❑ Monthly content supervisor meetings



Administrative Initiatives

- ❑ Implementation of new teacher induction program into the third year
- ❑ RTI
- ❑ Lesson Study
- ❑ Curriculum Mapping
- ❑ Action Plans
 - Coordination with School Based Professional Development Committees
 - Driven by student needs as discovered through standardized test score analysis



Administrative Initiatives

- ❑ Align curriculum with NJCCC Standards
- ❑ Anticipate and align language arts/English and mathematics curriculum to Common Core Standards
- ❑ Expanding horizontal and vertical articulation to include Special Education teachers
- ❑ 3 Professional Days for Teachers
- ❑ Additional contractual time for collaboration



West Milford Township

Community



**Families and
the Community
as School Partners**



Community Partnerships

- ❑ HomeLogic
- ❑ Family Math and Literacy events
- ❑ Public and school libraries
- ❑ West Milford website as resource for parents and community



Student Achievement



*Success
for ALL*